

AFM measurements of nanoscale changes on CHO cell surface induced by Met receptor activation

Kanazawa Univ.¹, Yokohama City Univ.²

Kenta Sawada¹, Keisuke Miyazawa¹, Takehiko Ichikawa¹, Makiko Kudo¹, Katsuya Sakai¹, Hiroki Sato², Kunio Matsumoto¹, Takeshi Fukuma¹

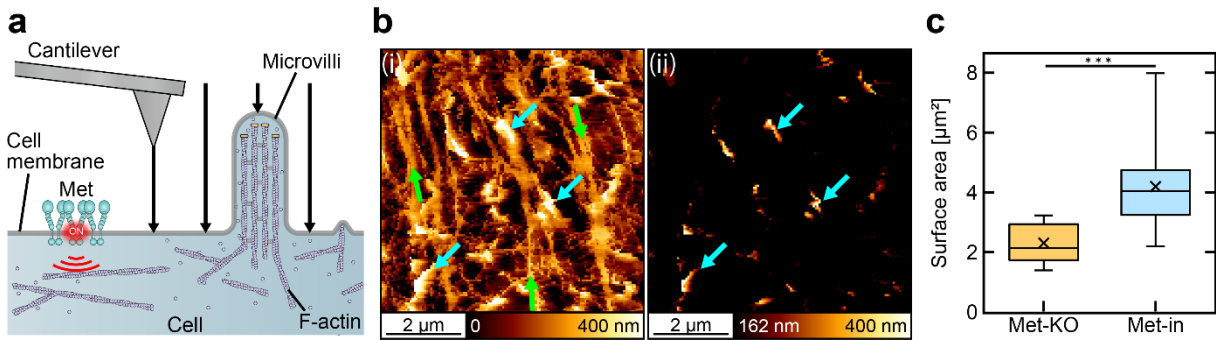


Fig. 1: (a) Schematic of AFM measurement on a live cell surface. (b)(i) AFM image of Met-in CHO cell (blue arrow: microvilli, green arrow: F-actin). (ii) Microvilli areas extracted by removing the areas lower than a height threshold, 162 nm from the lowest height in (i). (c) Surface areas of microvilli on Met-KO/in CHO cell surfaces calculated from the AFM images.