

Supplemental Data for the CO_x Thermal Oxidation Process for CO₂ Capture

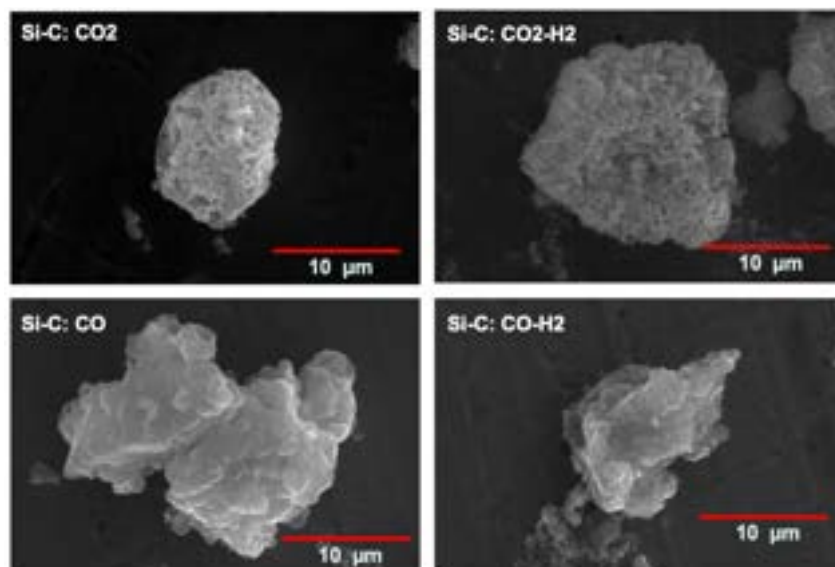


Figure 1: SEM images for the samples produced from each of the four varied gas compositions.

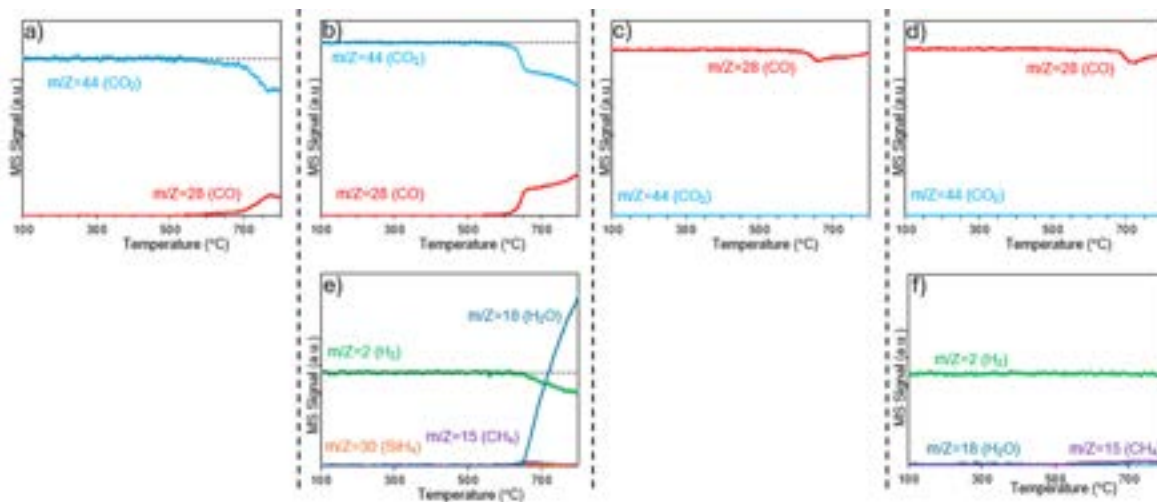


Figure 2: MS (Mass Spectrometry) data for the gas composition leaving the reactor under each of the four different gas compositions. The feed gas compositions are a) CO₂, b) CO₂ + H₂, c) CO, and d) CO + H₂. Not shown is the argon gas used at a similar flow rate for all experiments in order to establish a standard by which to compare results.

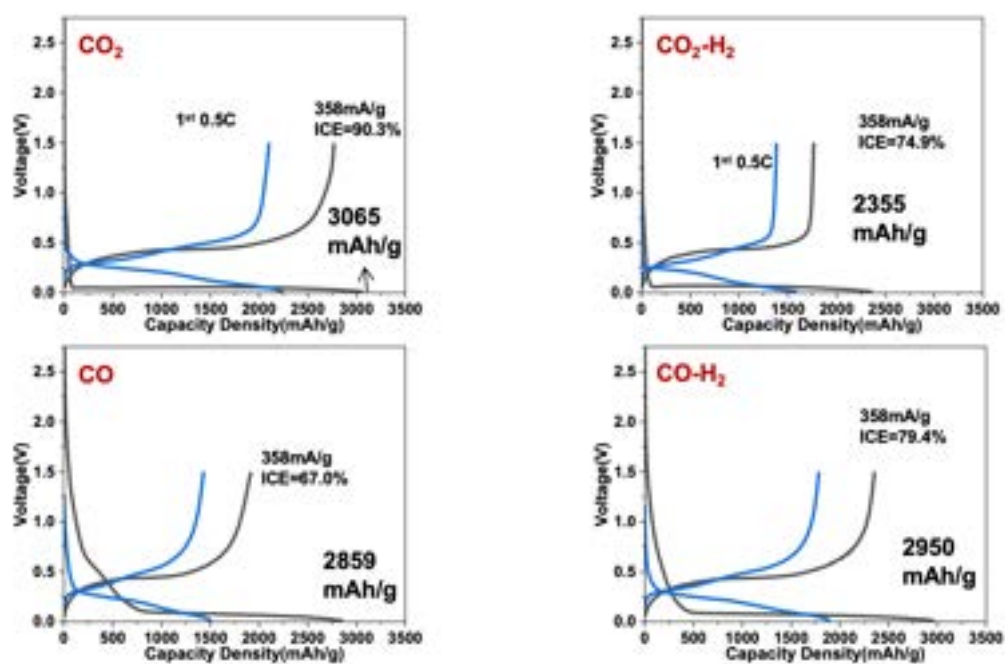


Figure 3: Initial charging data for all four samples. Black is the first charge while blue is the second.

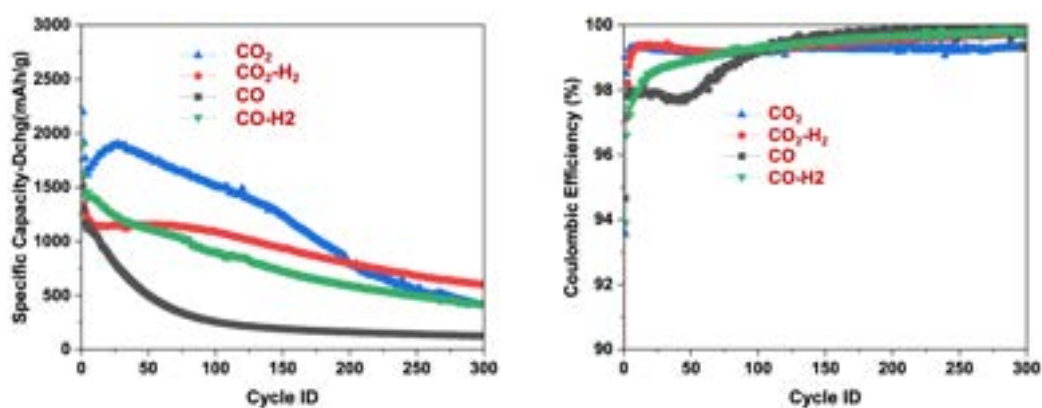


Figure 4: Electrochemical performance for all four samples.